

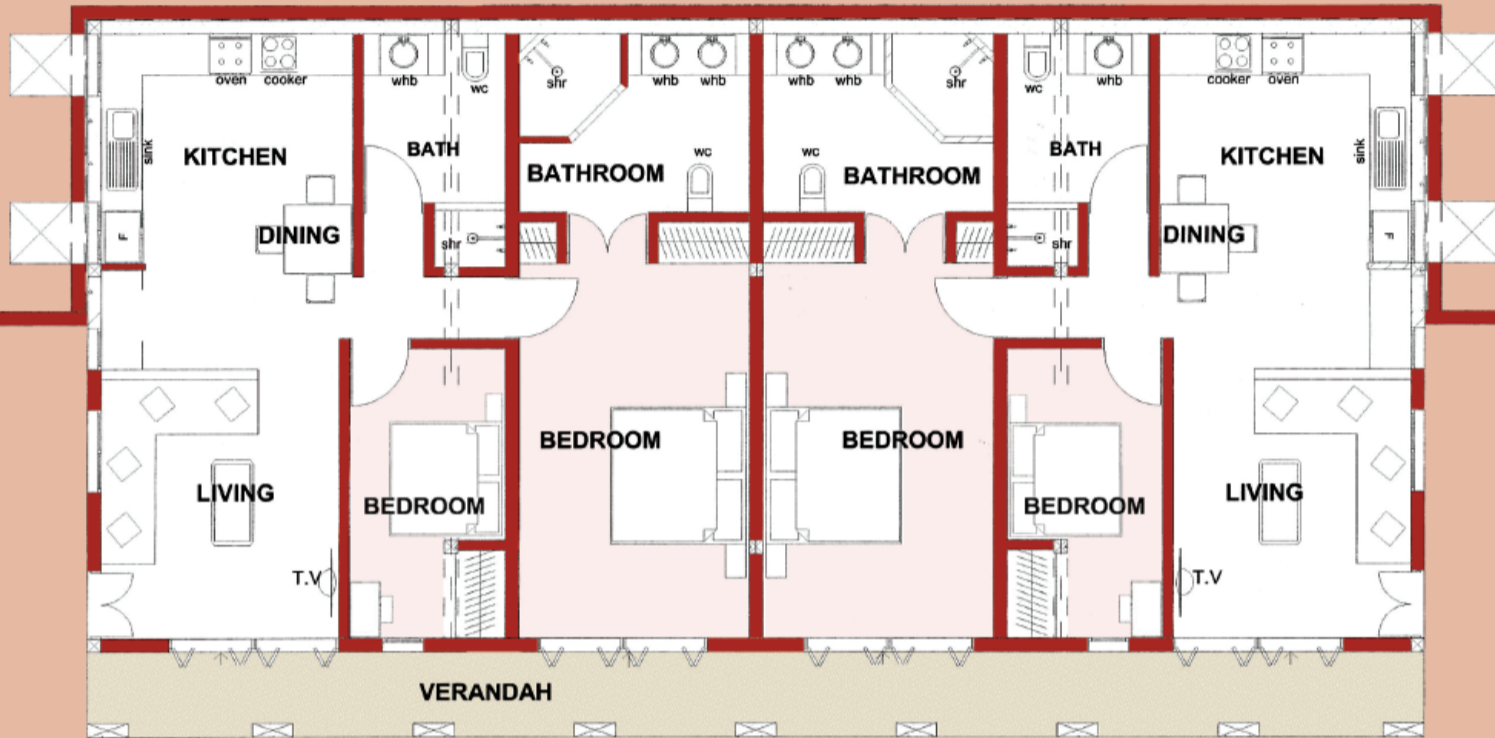


PALMERIE APARTMENTS  
11, 12, 15 & 16

Medina Palms



# PALMERIE APARTMENTS



*Medina Palms*

## Palmerie Apartments

Total 110 square metres

Nos: 11, 12, 15, & 16

### Living Spaces:

Living room	3.5m x 4.5m
Bedroom (Master)	3.5m x 6m
Bedroom 2nd	2.3m x 4.3m
Kitchen/Dining	3.7m x 4.5m
Bath room	3.4m x 2.5m

Not to Scale : These particulars are for illustrative purposes only. Dimensions are in metres and are approximate

**Important Notice :**  
These particulars are for illustrative purposes only. We operate a policy of continuous product development and individual features such as windows, and elevational treatments may vary from time to time, as may heating & electrical layouts. Consequently these particulars should be treated as general guidance only and cannot be relied upon as accurately describing any of the Specified matters prescribed by any Order made under the Property misdescriptions Act 1991. Nor do they constitute a contract, part of a contract or warranty. The name given to the apartment block is for marketing purposes only and may not form part of the official postal address.

**Note :** Dimensions should not be used for carpet sizes, appliance space or items of furniture. Purchasers furniture may be of a different size to that indicated. Kitchen layouts are subjected to continual reviews & therefore could change from those shown here. Please ask sales staff for further information and clarification.  
**Production Date :** 30.03.2010  
**Artwork Design by Stanley Partnership Architects**

