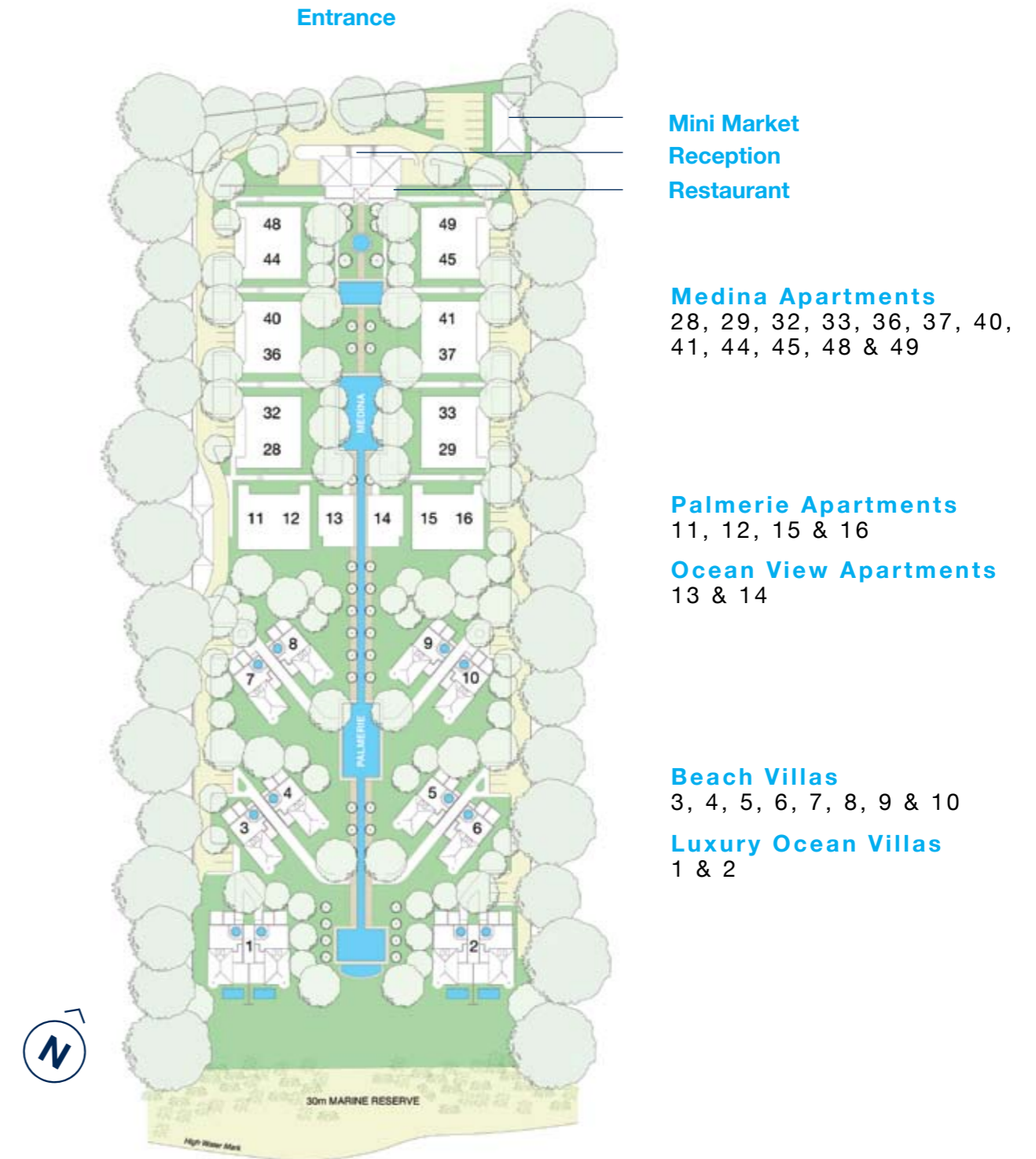


Site Layout

Medina Palms is a 6 acre walled site on the Indian Ocean with rising ground to the rear of the plot. The houses are on the ground floor and first floor, with a roof structure in keeping with other local developments. Premium villas are located at the front of the plot near palm trees and the beach. The Medina section, meaning 'old walled village', has courtyards and lush tropical gardens with several mature indigenous trees. Pools and waterfalls run from the higher Medina section down to the beach. There are spectacular views of the sea.

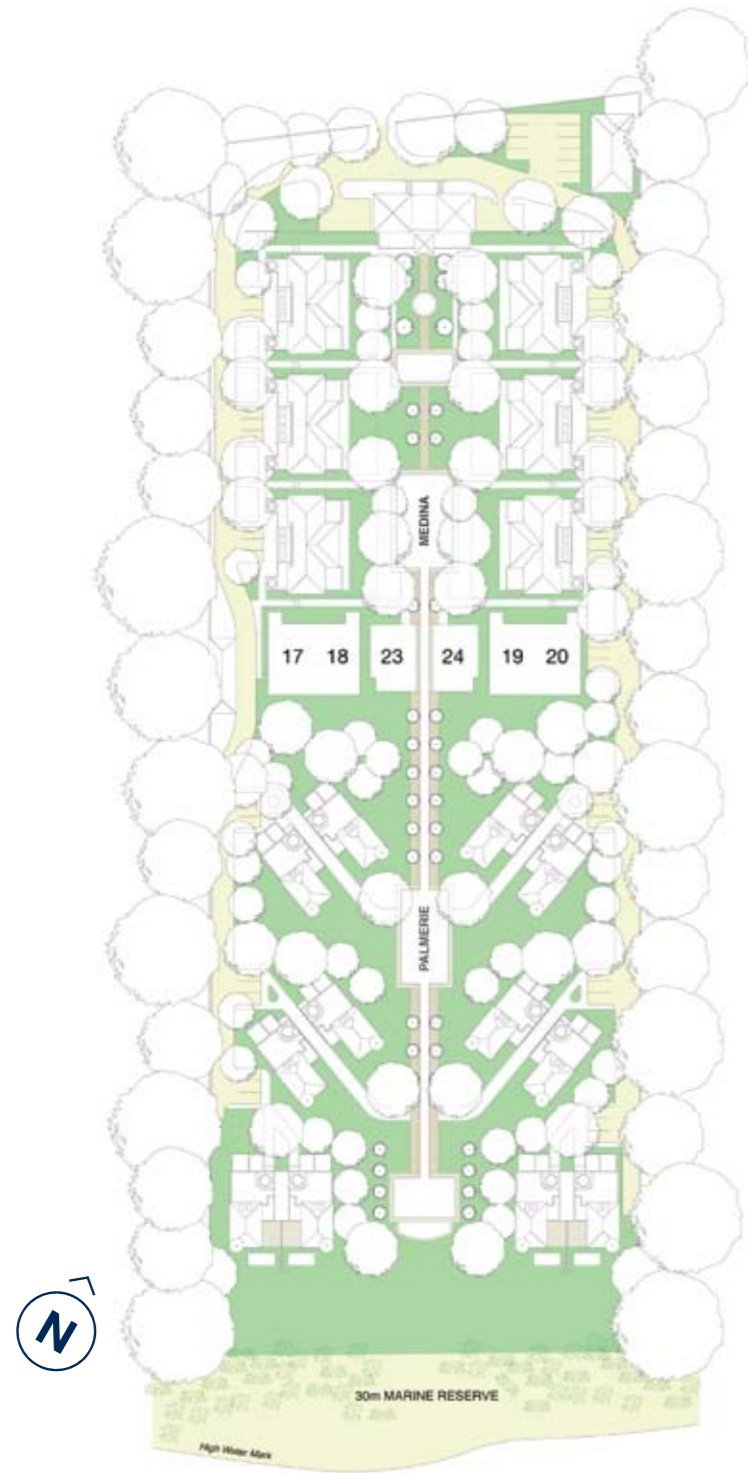


Site plan – Garden Level



Not to scale: These particulars are for illustrative purposes only. Dimensions are approximate.

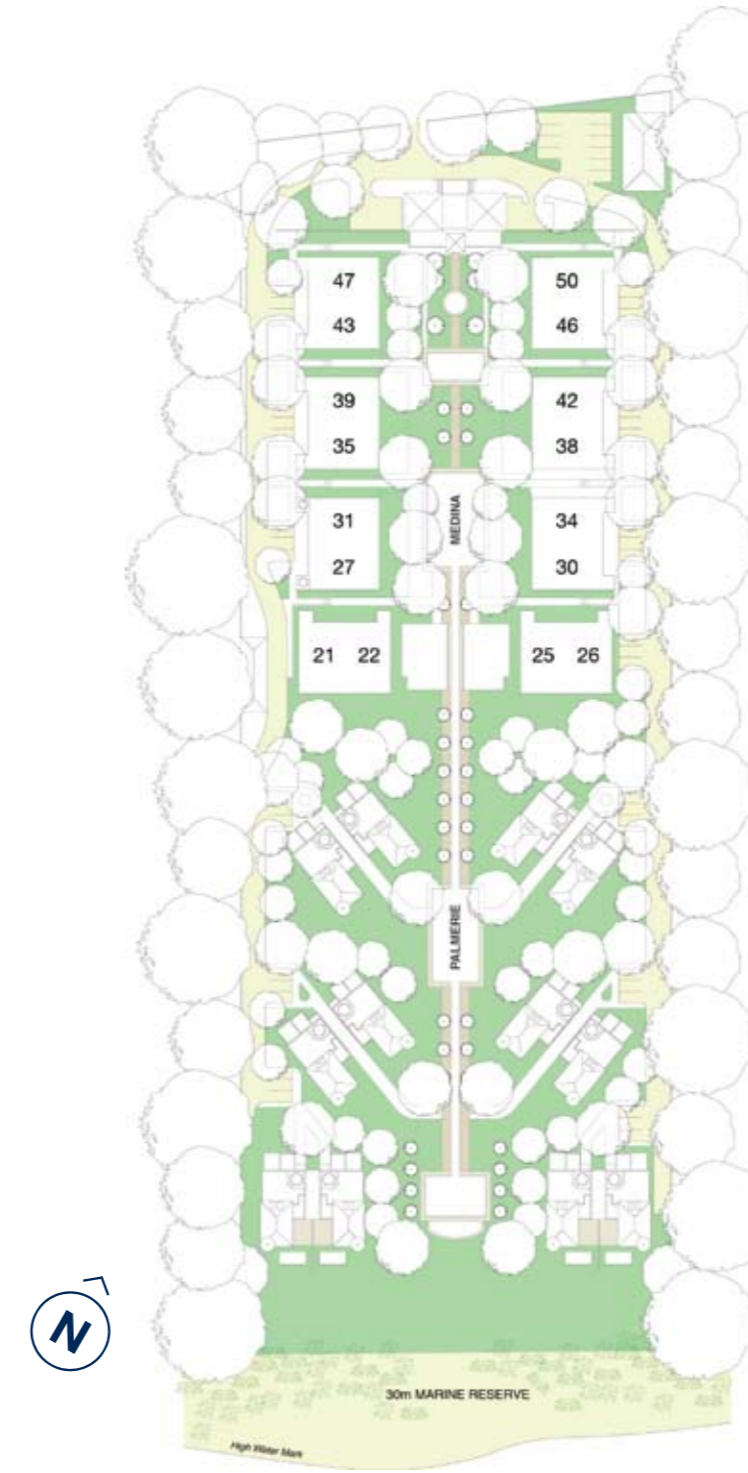
Site plan - Middle Level



Ocean View Lodges
23 & 24

Ocean Apartments
17, 18, 19 & 20

Site plan – First Floor Level



Medina Penthouses
27, 30, 31, 34, 35, 38,
39, 42, 43, 46, 47 & 50

Ocean Penthouses
21, 22, 25 & 26

Not to scale: These particulars are for illustrative purposes only.
Dimensions are approximate.

Not to scale: These particulars are for illustrative purposes only.
Dimensions are approximate.